

PITX-MX60 Series

Extreme Temperature

Single Board Computer in Pico-ITX Form Factor

with NXP® ARM® Cortex®-A9 Core i.MX6 Processors



- NXP® ARM® Cortex®-A9 Core i.MX6 Dual Processors
- 1GB/2GB DDR3 memory
- 1x LVDS, 1x HDMI for video output
- 2x LAN for Ethernet
- 3x USB2.0, 1x USB OTG, 2x COM, 1x GPIO/SPI/I2C, 1x CAN for peripherals
- 4GB/8GB eMMC onboard, 1x Micro-SD Card Cage for storage
- 1x mPCIe for expansion
- Extreme temperature model available: -40°C ~ 85°C

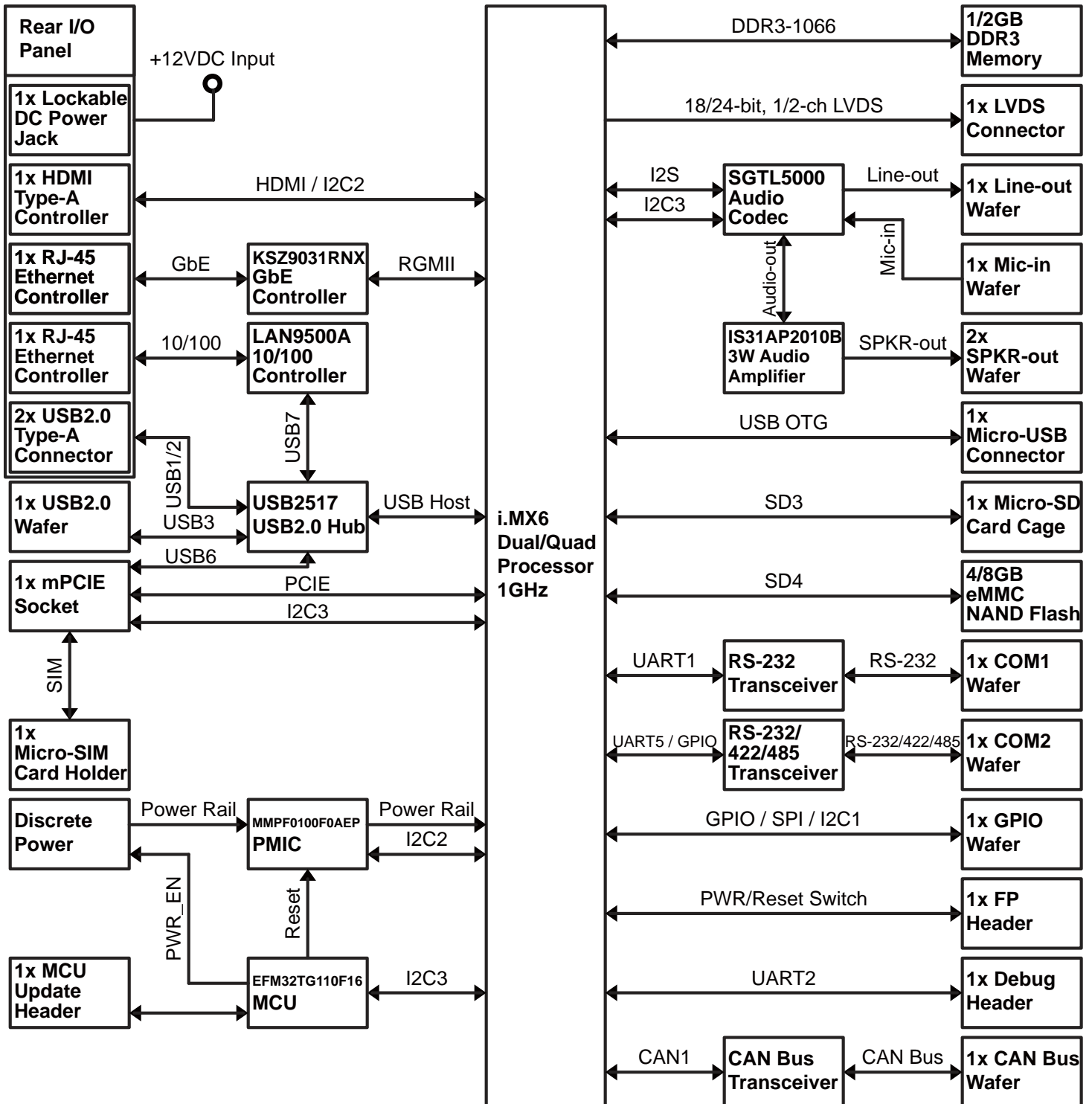


Product Overview

PITX-MX60 Series is a Pico-ITX single board computer based on NXP® ARM® Cortex®-A9 Core i.MX6 Dual Processors. It features ultra-small and compact form factor, low power consumption, fanless architecture and extreme operating temperature range for partial models. In addition to HDMI, USB and serial ports, it provides a highly flexible connectivity option for GPIO / SPI / I2C,

CAN bus and allows connection to many off-the-shelf peripherals. Thus, it is an ideal platform to easily generate small, portable or mobile embedded devices used in every possible environment and application, such as automotive infotainment, telematics, healthcare, thin clients or HMI.

Block Diagram

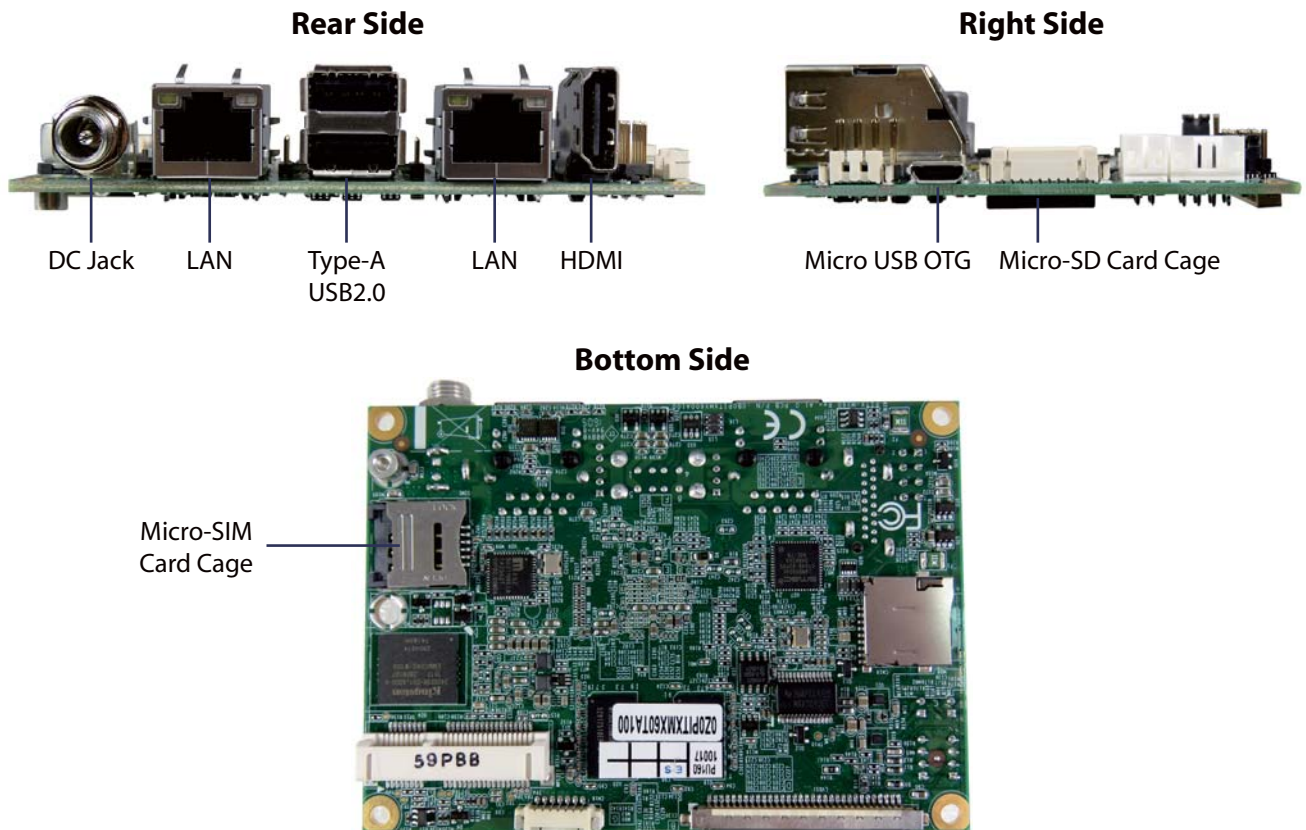


Technical Information

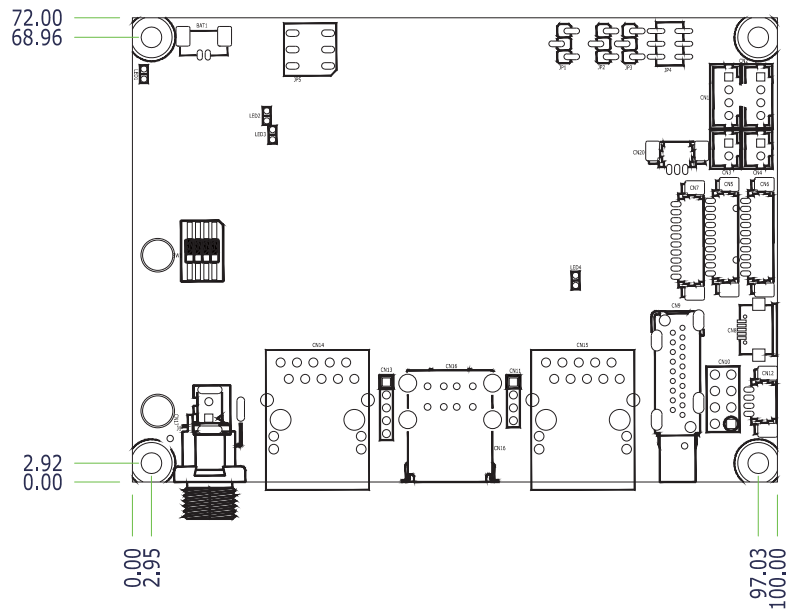
CPU Support	NXP® ARM® Cortex®-A9 Core i.MX6 Dual Automotive (Dual Core, 1M Cache, 1 GHz)
Memory	1GB DDR3-1066 Onboard 2GB DDR3-1066 Onboard
Display Interfaces	1x LVDS (18/24-bit, 1/2-ch, 1920 x 1200 @ 60Hz) 1x HDMI (1920 x 1080 @ 30Hz, on rear)
Multiple Display	Dual
Audio Chipset	NXP® SGT5000
Audio Interfaces	2x Speaker-out (3W, ISSI IS31AP2010B) 1x Line-out (by header) 1x Mic-in (by header)
Ethernet	1x GbE LAN (RJ-45 on rear, Micrel KSZ9031RNX) 1x 10/100 LAN (RJ-45 on rear, Microchip LAN9500A)
USB	3x USB2.0 (2x Type A on rear, 1x by header) 1x USB OTG (Micro-USB on right)
Serial Ports	1x RS-232/422/485 (by header) 1x RS-232 (by header)

Other I/O Ports	1x GPIO / SPI / I2C 1x CAN Bus
Storage & Expansion	4GB eMMC onboard 8GB eMMC onboard 1x Micro-SD Card Cage (on right) 1x mPCIe (full size) 1x Micro-SIM Card Cage
Power Supply	Connector: Lockable DC Jack (on rear) Input Voltage: DC 12V
System Control & Monitoring	1x Header for Front Panel (Power Switch / LED, Reset & WWAN LED)
OS Support	Linux 3.0.35
Dimensions	Pico-ITX (100 x 72 mm / 3.94" x 2.83")
Mechanical Characteristics	Operation Temp.: -40°C ~ 85°C / -40°F ~ 185°F (Extreme) Storage Temp.: -55°C ~ 85°C / -67°F ~ 185°F (Extreme) Humidity: 0% ~ 95%
Certification	CE, FCC Class A

I/O Ports



Mechanical Dimensions



Ordering Information



Article	Description
PITX-MX60T	NXP i.MX 6D Automotive, 1GB DDR3, 4GB eMMC , 1x μ SD, 1x LVDS, 1x HDMI, 2x LAN, 1x mPCIe, 1x μ SIM, 3x USB2.0, 1x USB OTG, 2x COM, Op. temp.: -40 ~ 85°C
PITX-MX61T	NXP i.MX 6D Automotive, 2GB DDR3, 4GB eMMC , 1x μ SD, 1x LVDS, 1x HDMI, 2x LAN, 1x mPCIe, 1x μ SIM, 3x USB2.0, 1x USB OTG, 2x COM, Op. temp.: -40 ~ 85°C
PITX-MX62T	NXP i.MX 6D Automotive, 1GB DDR3, 8GB eMMC , 1x μ SD, 1x LVDS, 1x HDMI, 2x LAN, 1x mPCIe, 1x μ SIM, 3x USB2.0, 1x USB OTG, 2x COM, Op. temp.: -40 ~ 85°C
PITX-MX63T	NXP i.MX 6D Automotive, 2GB DDR3, 8GB eMMC , 1x μ SD, 1x LVDS, 1x HDMI, 2x LAN, 1x mPCIe, 1x μ SIM, 3x USB2.0, 1x USB OTG, 2x COM, Op. temp.: -40 ~ 85°C

